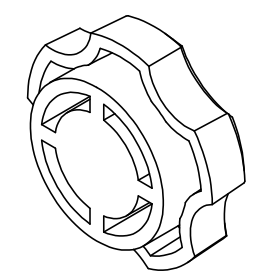
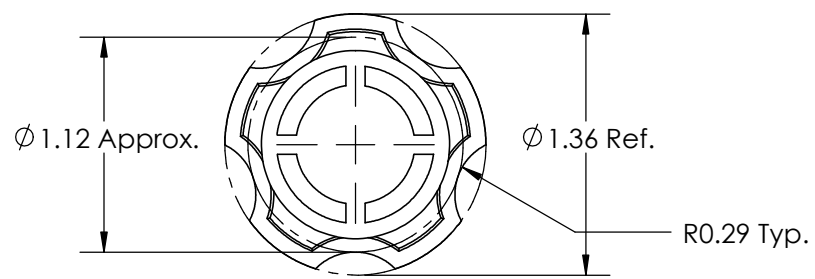
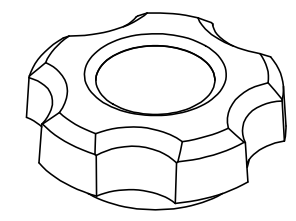
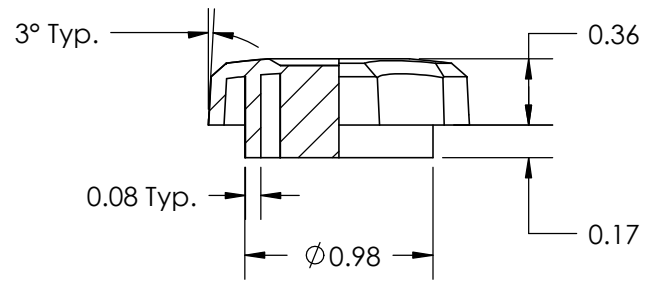


45° x 0.06 Diamond Polish



REV	BY	DATE	COMMENT	DIMENSIONS ARE IN INCHES TOLERANCES FRACTIONAL ± TWO PLACE DECIMAL ± 0.03 THREE PLACE DECIMAL ± 0.010 UNLESS OTHERWISE NOTED	DRAWN	EAM		INNOVATIVE COMPONENTS			
0	EAM	11/27/07	RELEASE DATE		APPROVED	LQR		PART NAME			
					DATE	11/27/07	COMMENTS MIN. TORQUE N/A in.-lbs.				
					KNOB MATERIAL						
<b>PROPRIETARY AND CONFIDENTIAL</b> THE INFORMATION CONTAINED IN THIS DRAWING IS THE SOLE PROPERTY OF INNOVATIVE COMPONENTS. ANY REPRODUCTION IN PART OR AS A WHOLE WITHOUT THE WRITTEN PERMISSION OF INNOVATIVE COMPONENTS IS PROHIBITED.					KNOB FINISH		INSERT MATERIAL		PART NUMBER	DRAWING NUMBER	
					INSERT PART NUMBER		INSERT FINISH		F2 MASTER		F2
								SCALE 1:1	SHEET 1 OF 1		